



# BBS

## SUSTAINABILITY & ESG REPORT 2026

---

Building Responsible, Ethical & Sustainable Global Supply Networks

This report reflects BBS's environmental, social, and governance initiatives during 2025 and outlines long-term goals and commitments to responsible business practices. BBS is a global sourcing & wholesaling platform partnering with manufacturers and buyers across multiple regions.

# Disclaimer

---

This Sustainability & ESG Report is prepared by Bulk Buyers Sourcing & Services (BBS) for informational purposes. The report reflects internal assessments, policies, and initiatives undertaken during the reporting period.

Some statements in this document may be forward-looking and are based on current expectations and assumptions. Actual outcomes may vary due to changes in business, regulatory, or market conditions. BBS undertakes no obligation to update this report except where required by law.



# TABLE OF CONTENTS

1. Message from Leadership
2. Message from the Founder CEO, BBS
3. Message from the Co founder, BBS
4. Investor Overview
5. Executive Summary
6. About BBS
7. Business Model & Operations
8. ESG Overview
9. Global Sourcing Landscape
10. Environmental Responsibility
11. Social Responsibility
12. Governance & Ethics
13. Sustainable Supply Chain
14. ESG Performance Metrics
15. Stakeholder Engagement
16. Risk & Opportunity Assessment
17. Case Studies
18. Data & Methodology
19. Future Roadmap
20. Appendices
21. Glossary
22. BBS Ventures

# Message from the CEO



**At BBS, sustainability is central to how we build, operate, and grow our business. We connect global brands, manufacturers, and buyers through responsible and ethical sourcing and wholesale services, guided by a strong commitment to environmental stewardship, social dignity, and robust governance.**

**This ESG Report represents an important milestone in our journey toward greater transparency, accountability, and long-term value creation. As we move forward, we remain focused on strengthening our practices, delivering measurable progress, and creating meaningful impact across every aspect of our operations.**

**— Founder CEO, BBS**



# Message from the Founder



**At Bulk Buyers Sourcing & Services (BBS), we believe that responsible business is fundamental to long-term success. As a global sourcing and wholesale organization, our operations influence partners, people, communities, and the environment throughout our supply chain.**

**Our approach is guided by sustainability, transparency, and ethical practices. We are committed to responsible sourcing, fair working conditions, and continuous improvement as our ESG journey continues to evolve.**

**This Sustainability & ESG Report reflects our commitment to aligning business growth with environmental responsibility, social integrity, and strong governance. Together with our stakeholders, we are working to build a resilient and sustainable future for BBS.**

**— Co founder, BBS**

# Investor Overview

A large, stylized illustration in the background of the slide. It features a series of ascending steps or blocks. Silhouettes of business professionals are shown at various stages of the ascent, some holding documents or interacting. A large, light-colored arrow points upwards from the bottom left towards the top right, passing behind the figures. There are also smaller icons like a bar chart and a line graph with a checkmark, suggesting growth and success.

**At Bulk Buyers Sourcing & Services (BBS), we view investors as long-term partners in our growth journey. Our business strategy focuses on creating sustainable value through responsible sourcing, operational efficiency, and ethical governance.**

**BBS operates within a global sourcing ecosystem supported by transparent processes, strong supplier relationships, and risk-aware decision-making. Our ESG-focused approach enhances business resilience, supports long-term performance, and strengthens stakeholder confidence.**

**This report demonstrates how sustainability, governance, and responsible operations are integrated into our business model to support stable growth and long-term investor value.**



# Executive Summary

**This report outlines how BBS integrates Environmental, Social, and Governance considerations into its sourcing and wholesale operations. As a bridge between manufacturers and global buyers, BBS emphasizes responsible decision-making, ethical sourcing, and transparent governance.**

**During the reporting period, BBS focused on establishing ESG foundations that support sustainable growth, risk management, and long-term stakeholder trust.**



# About BBS

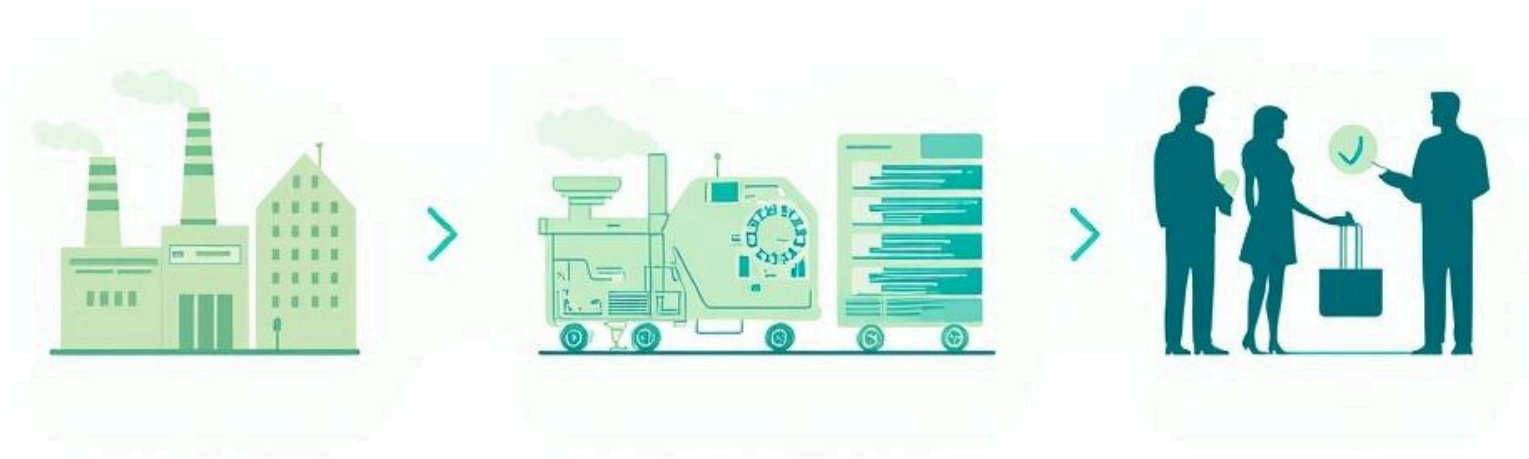
**Bulk Buyers Sourcing & Services (BBS) is a global sourcing and wholesale platform connecting manufacturers with buyers across international markets. We work closely with production partners to ensure quality, reliability, and responsible business practices.**

**With operational presence in Bangladesh and India, BBS supports buyers in regions including North America, Europe, and the Middle East. Our approach is built on trust, transparency, and long-term collaboration.**





# Business Model & Operations



**BBS operates as a strategic bridge between manufacturers and global buyers. Our business model includes supplier identification, product development support, quality assurance, and logistics coordination.**

**By aligning operational efficiency with responsible sourcing practices, BBS ensures reliable delivery, consistent quality, and transparent communication throughout the supply chain. This integrated model enables us to create value for both suppliers and buyers.**

# ESG Overview



**ESG stands for Environmental, Social, and Governance—a framework used to assess how responsibly a company operates. At BBS, ESG principles guide decision-making and long-term strategy.**

- **Environmental:** Managing environmental impact and encouraging responsible resource use
- **Social:** Supporting fair labor practices, safe working conditions, and community well-being
- **Governance:** Ensuring ethical leadership, transparency, and compliance

**This framework helps BBS align business growth with sustainable and responsible practices.**



# Global Sourcing Landscape

**BBS operates within a diverse global sourcing landscape, working with manufacturing partners primarily in South Asia while serving buyers across international markets. Our sourcing approach emphasizes quality, reliability, and ethical standards.**

**By combining local expertise with global coordination, BBS ensures smooth sourcing operations, effective communication, and consistent standards across regions.**

The background of the slide is a stylized illustration. It features a range of mountains in the distance, some with snow-capped peaks. In the foreground, there are several evergreen trees on the left side. On the right side, there is a silhouette of an industrial facility with several tall smokestacks. The entire scene is reflected in a body of water at the bottom. The color palette is muted, consisting of various shades of teal, green, and grey.

# **Environmental Responsibility**

**BBS recognizes the importance of minimizing environmental impact across sourcing and wholesale operations. While our core business is coordination and supply chain management, we actively encourage responsible practices among manufacturing partners.**

**Our environmental focus includes efficient resource usage, reduction of waste, and increased awareness of environmental risks across the supply chain. By promoting responsible sourcing, BBS aims to support long-term environmental sustainability.**



# Social Responsibility

**People are central to BBS's operations. We work to promote fair working conditions, respect for human rights, and safe environments across our supply chain.**

**BBS values diversity, inclusion, and professional development. Through collaboration with suppliers and partners, we aim to positively impact workers, communities, and customers while maintaining ethical business relationships.**





# Governance & Ethics

**Strong governance ensures transparency, accountability, and ethical decision-making at BBS. Our governance framework supports compliance with laws, responsible leadership, and risk management across operations.**

**BBS promotes ethical conduct through internal policies, partner expectations, and continuous oversight. These practices help build trust with stakeholders and support long-term business integrity.**





# Sustainable Supply Chain

**BBS works closely with manufacturing and logistics partners to promote responsible sourcing and supply chain transparency.**

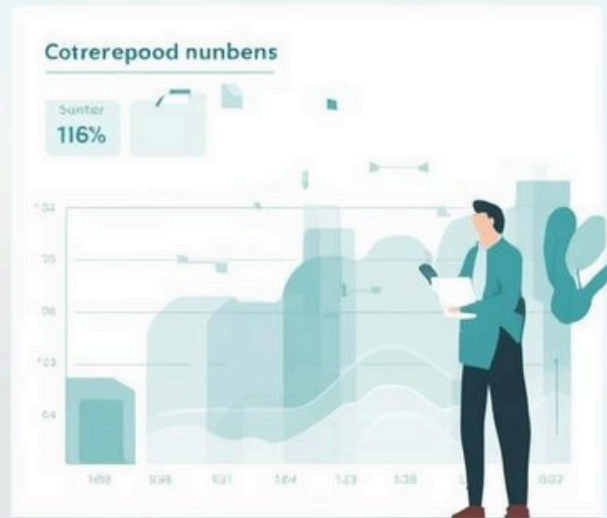
**Our approach emphasizes quality assurance, ethical standards, and long-term collaboration.**



**By integrating sustainability considerations into supplier selection and operations, BBS aims to strengthen supply chain resilience and reliability while supporting responsible business practices.**

# ESG Performance Metrics

To track progress and identify opportunities for improvement, BBS is developing ESG performance metrics aligned with its business operations. These metrics help measure environmental impact, social initiatives, and governance effectiveness.



As our ESG journey progresses, BBS aims to enhance data collection, transparency, and reporting accuracy to support informed decision-making and stakeholder communication.



# Stakeholder Engagement

**BBS believes that open communication and collaboration with stakeholders are essential for sustainable growth. Our stakeholders include customers, suppliers, employees, logistics partners, and the communities connected to our operations.**

**Through continuous dialogue and feedback, BBS seeks to understand stakeholder expectations, address concerns, and build long-term, trust-based relationships. Stakeholder engagement supports better decision-making and strengthens our ESG initiatives.**



The background features a stylized illustration with several large, light-colored question marks floating in the air. Below them, a group of diverse people are depicted in various poses, some standing and some in motion, suggesting a collaborative or thoughtful environment. The overall color palette is muted, with soft greens, yellows, and greys.

# **Risk & Opportunity Assessment**

**Operating in a global sourcing environment involves various risks and opportunities related to environmental, social, and governance factors. BBS regularly assesses these elements to identify potential challenges and areas for improvement.**

**Key considerations include supply chain disruptions, regulatory changes, environmental risks, and evolving customer expectations. By proactively managing risks and leveraging opportunities, BBS aims to enhance resilience and long-term value creation.**



# Case Studies

**This section highlights selected initiatives and practical examples that reflect BBS's ESG approach in action. These case studies demonstrate how responsible sourcing, ethical collaboration, and governance principles are applied across real-world scenarios.**



**Each example illustrates lessons learned and progress made toward building more sustainable and transparent supply chains.**



# Data & Methodology

**The information presented in this report is based on internal assessments, supplier inputs, and operational reviews conducted during the reporting period. BBS applies consistent methodologies to collect and analyze ESG-related data.**

**While data availability continues to evolve, BBS remains committed to improving accuracy, transparency, and consistency in ESG measurement and reporting.**



# Future Roadmap

**BBS views sustainability as a continuous journey. Looking ahead, we aim to strengthen ESG integration across sourcing, operations, and partnerships.**



**Future priorities include enhancing environmental awareness, expanding social impact initiatives, strengthening governance practices, and improving ESG data transparency. These efforts will guide BBS toward long-term responsible growth.**



# Appendices

**The appendices section provides additional reference information that supports the content of this Sustainability & ESG Report. It includes supplementary explanations, extended frameworks, and contextual details related to BBS's operations and ESG approach.**

**This section is intended to enhance transparency and offer readers deeper insight into how ESG principles are applied across BBS's sourcing and wholesale activities.**



# Glossary

**This glossary provides definitions of key terms and concepts used throughout the Sustainability & ESG Report. It is designed to support clarity and understanding for readers from diverse backgrounds.**



**By offering clear explanations of ESG-related terminology, BBS aims to make sustainability reporting more accessible and transparent for all stakeholders.**

# BBS Ventures

**BBS Ventures represents the growth and innovation arm of Bulk Buyers Sourcing & Services (BBS). It focuses on exploring new business opportunities, partnerships, and value-driven initiatives aligned with BBS's long-term strategy and ESG principles.**

**Through BBS Ventures, the company aims to support scalable business models, responsible innovation, and market expansion while maintaining strong governance and ethical standards. Each venture is evaluated with a focus on sustainability, operational efficiency, and long-term value creation.**



**BBS Ventures strengthens BBS's ability to adapt to changing market dynamics, invest in future-ready solutions, and create sustainable growth opportunities for stakeholders.**



